

Price on request

Rentals apartment

1 room

Surface : 25 m²

Surface of the living : 1876 m²

Exposition : Sud

View : Aperçu mer

Hot water : Individuelle électrique

Inner condition : excellent

Standing : residential

Amenities :

lift, gated, calm, residential

1 terrace

1 shower

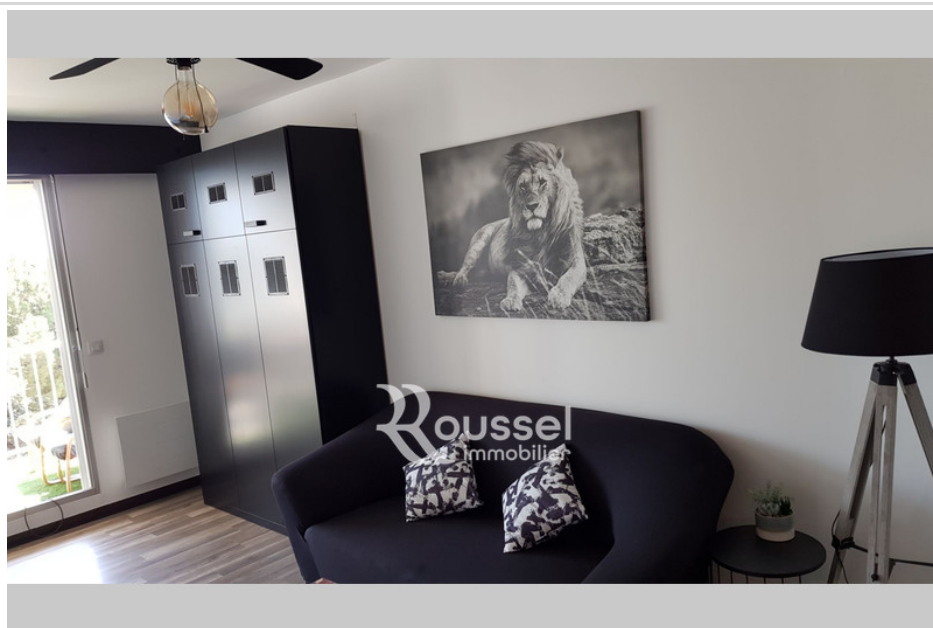
1 WC

1 parking

1 cellar

Energy class (dpe) : C

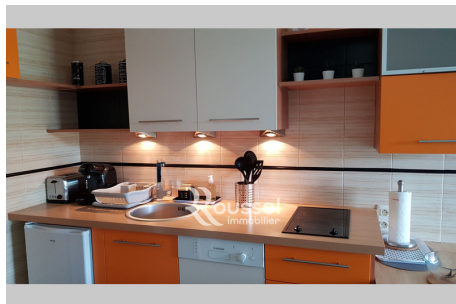
Emission of greenhouse gases
(ges) : A



Apartment Sète

SETE ANNUAL RENTAL Fully furnished studio of 25.74 m² (Carrez law) completely renovated, featuring storage space at the entrance, an equipped kitchen, a living room with a large wall bed, a bathroom, a separate toilet, and a loggia with sea view. Gated residence with a private parking space at the foot of the building and an elevator. Residence overlooking Boulevard Joliot Curie - close to Joliot High School - Chemistry IUT - Ifremer - Nursing School - near the Hospital - 200 m from Lazaret beach - 400 m from shops and the coastal road - Bus stops and bike paths 50 m away. Ref. : 546L347A

02/08/2025 - Prix T.T.C



Roussel Immobilier - 10 Boulevard René Tulet, 34560 POUSSAN

Tél : 04 34 53 34 16 - rousselimmopoussan@gmail.com - www.rousselimmobilier.com

Code NAF 6831Z - SIRET 4410196000038 - Garantie financière : SOCAF, Montant de 120000€ - Médiation : Vivons Mieux Ensemble

Document non contractuel - Barème des prix disponible sur notre site internet